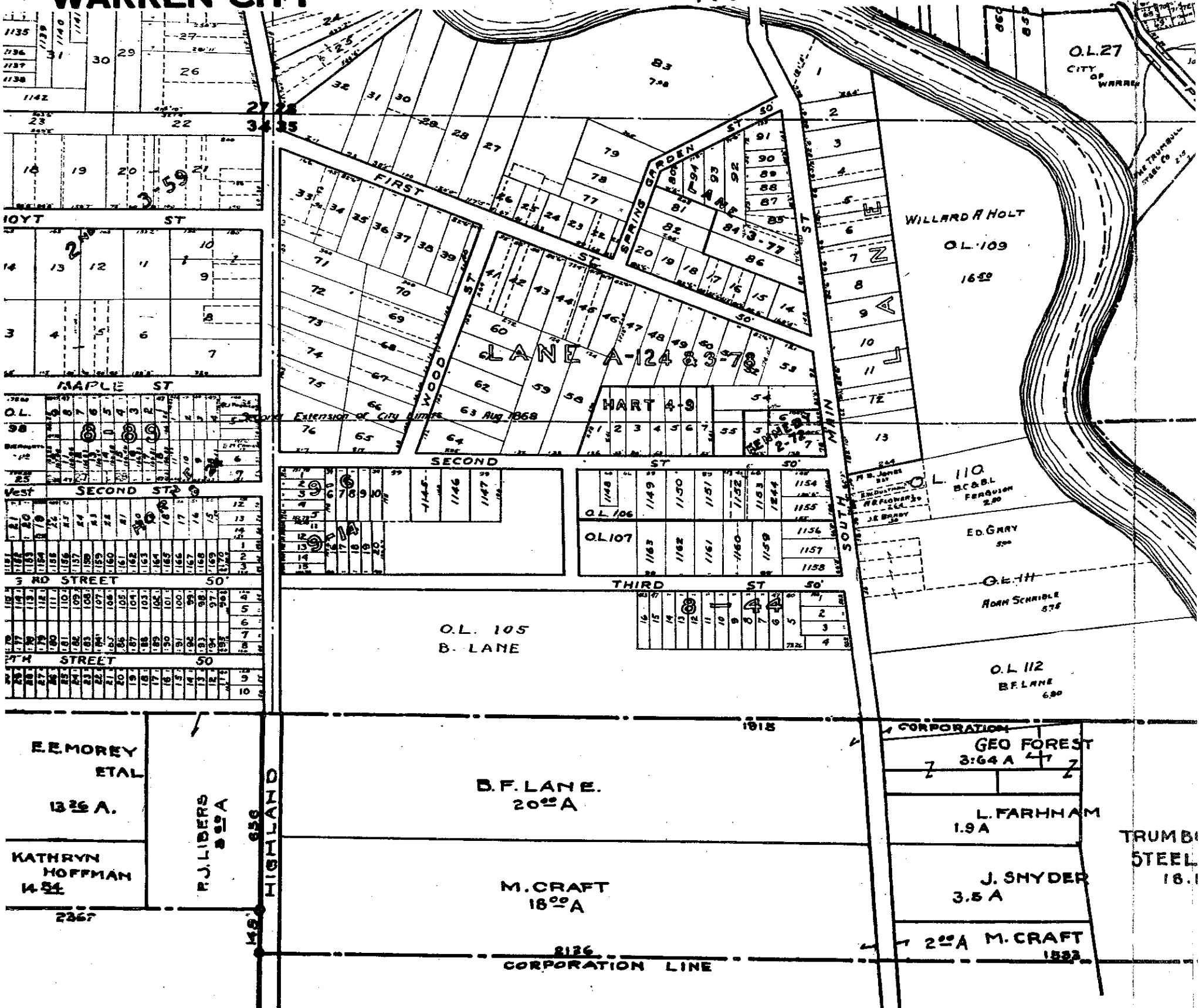


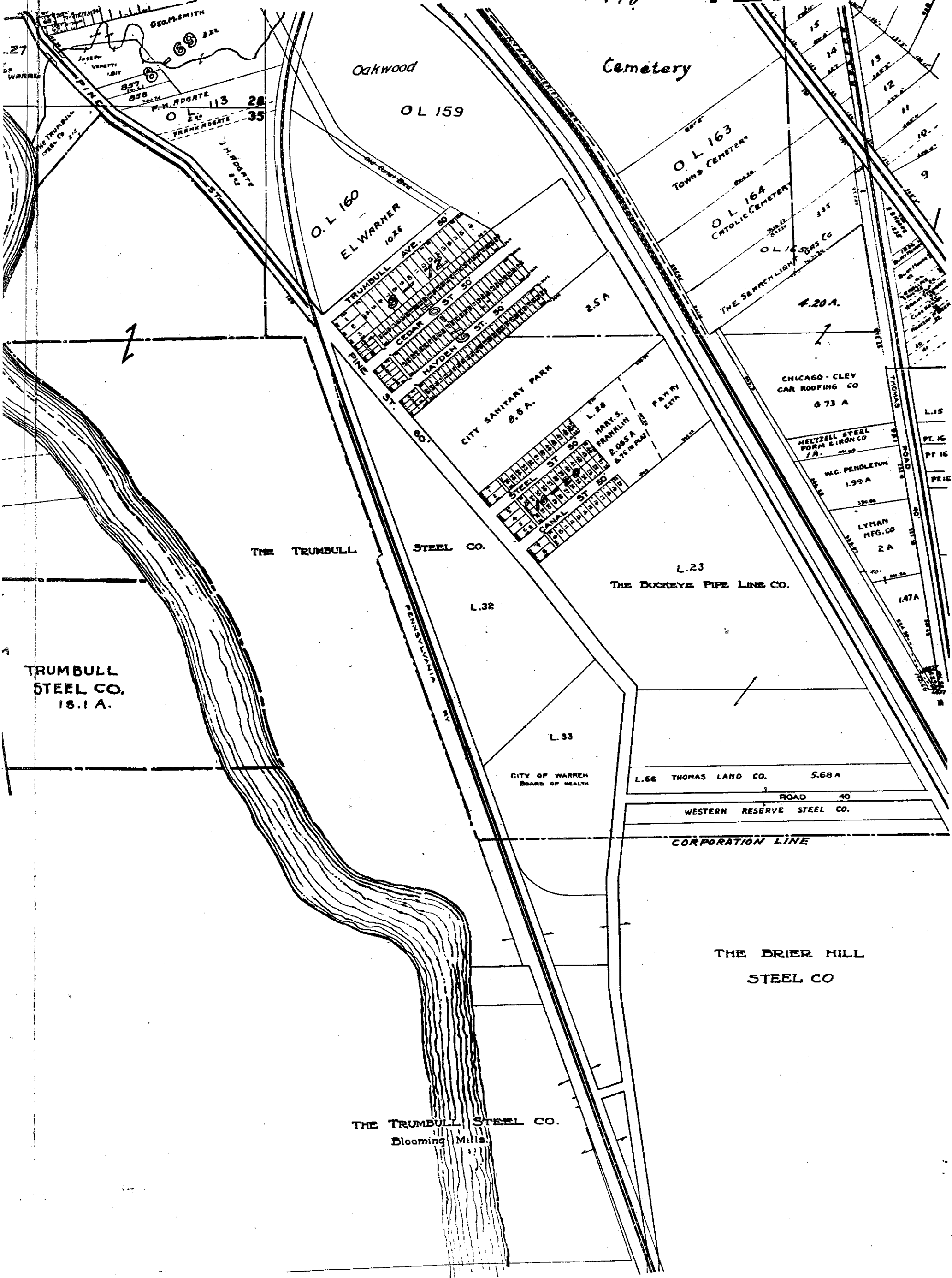
WARREN CITY

1918

PLATE 22A



1918



Oakwood

Cemetery

O L 159

O L 163
TOWNS CEMETERY

O.L. 160
EL WARNER
10.25

O L 164
CATHOLIC CEMETERY

TRUMBULL AVE. 50'
CEDAR ST. 50'
HAYDEN ST. 50'
PINE ST. 50'

THE SEARCHLIGHT
GAS CO

4.20 A.

CITY SANITARY PARK
8.6 A.

CHICAGO - CLEV
CAR ROOFING CO
6.73 A

METZEL STEEL
FORM & IRON CO
7 A.

W.C. PENOLETON
1.99 A

LYMAN
MFG. CO
2 A

THE TRUMBULL
STEEL CO.

L.23
THE DUCKEYE PIPE LINE CO.

TRUMBULL
STEEL CO.
18.1 A.

L. 33

CITY OF WARREN
BOARD OF HEALTH

L.66 THOMAS LAND CO. 5.68 A

ROAD 40
WESTERN RESERVE STEEL CO.

CORPORATION LINE

THE DRIER HILL
STEEL CO

THE TRUMBULL STEEL CO.
Blooming Mills